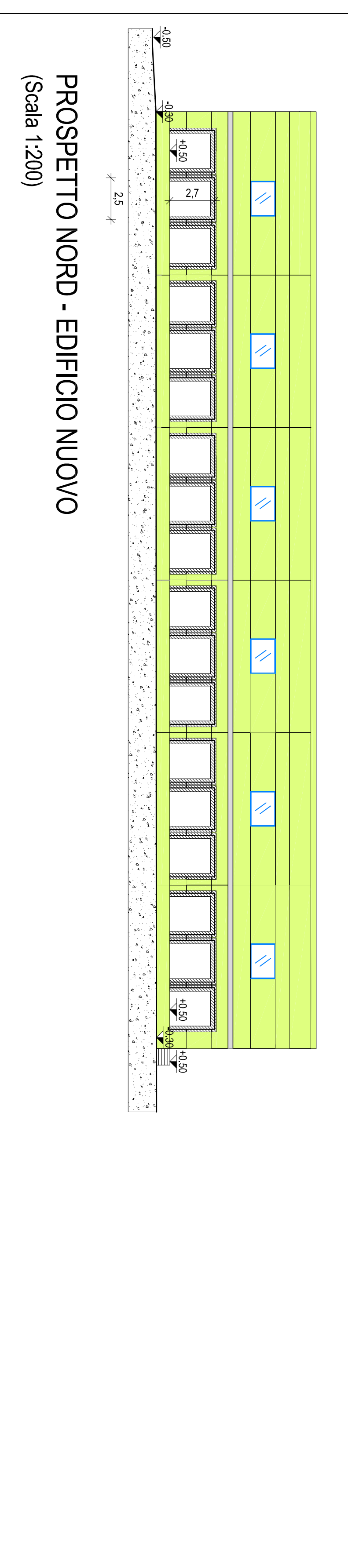
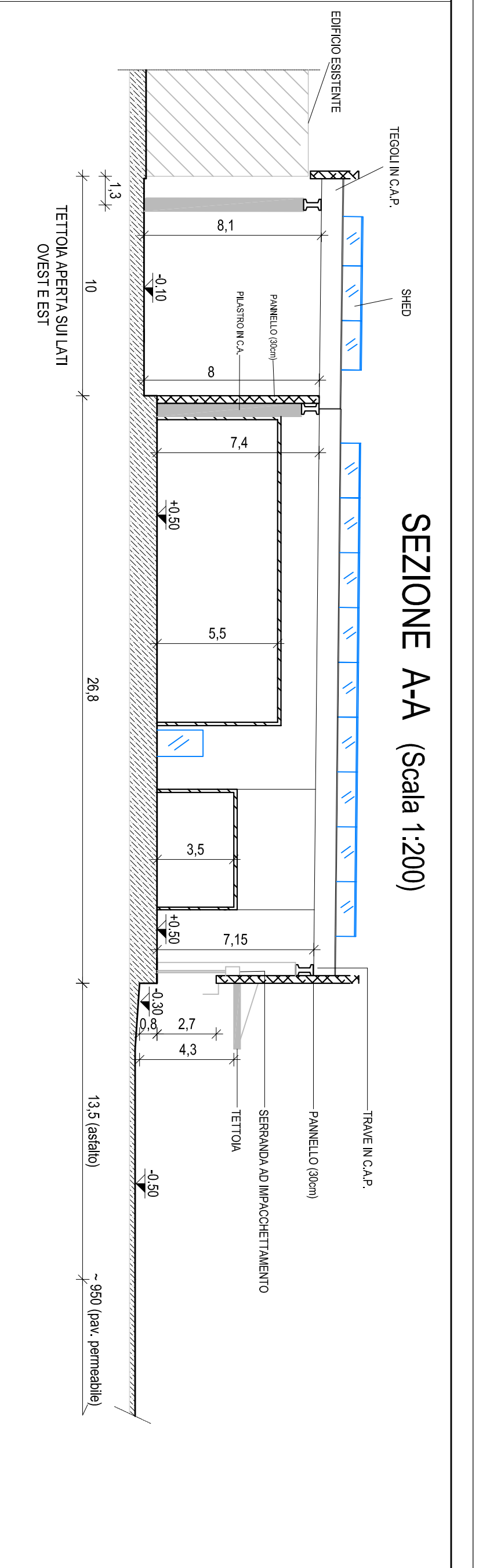
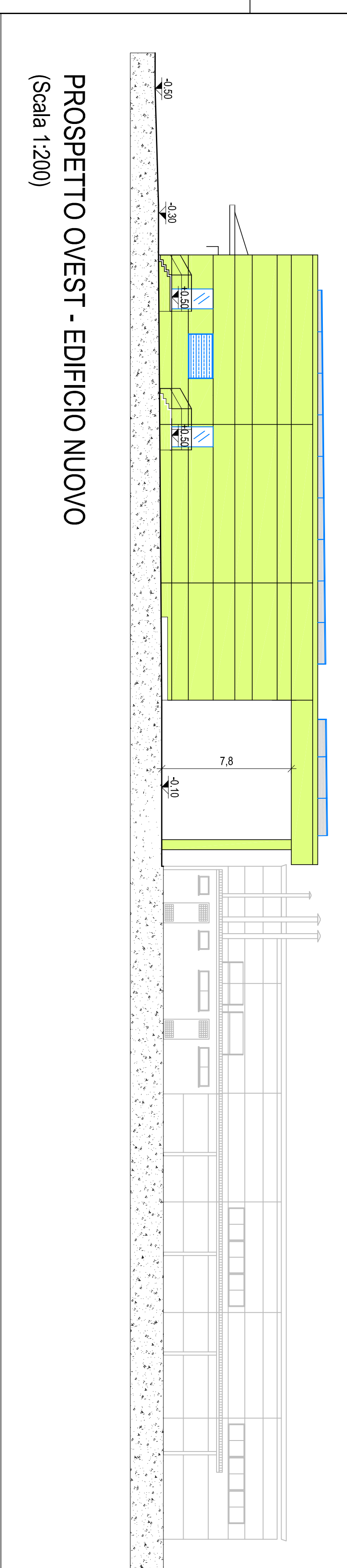
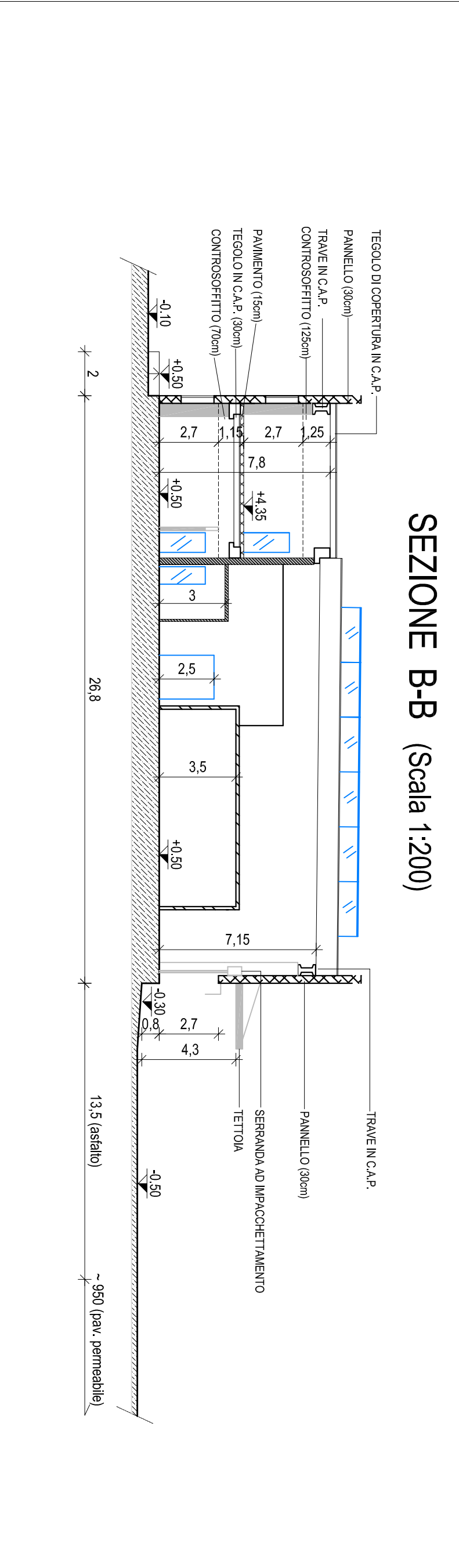


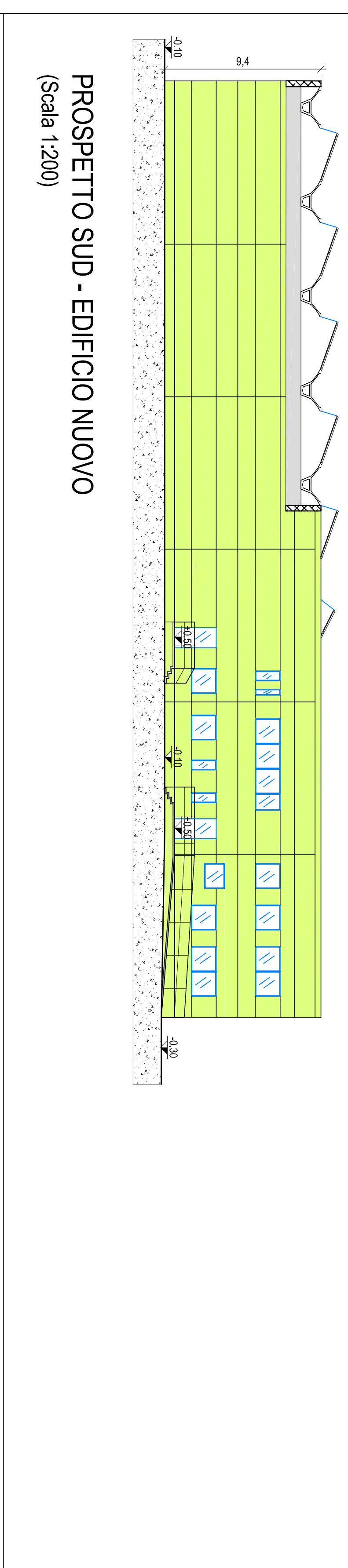
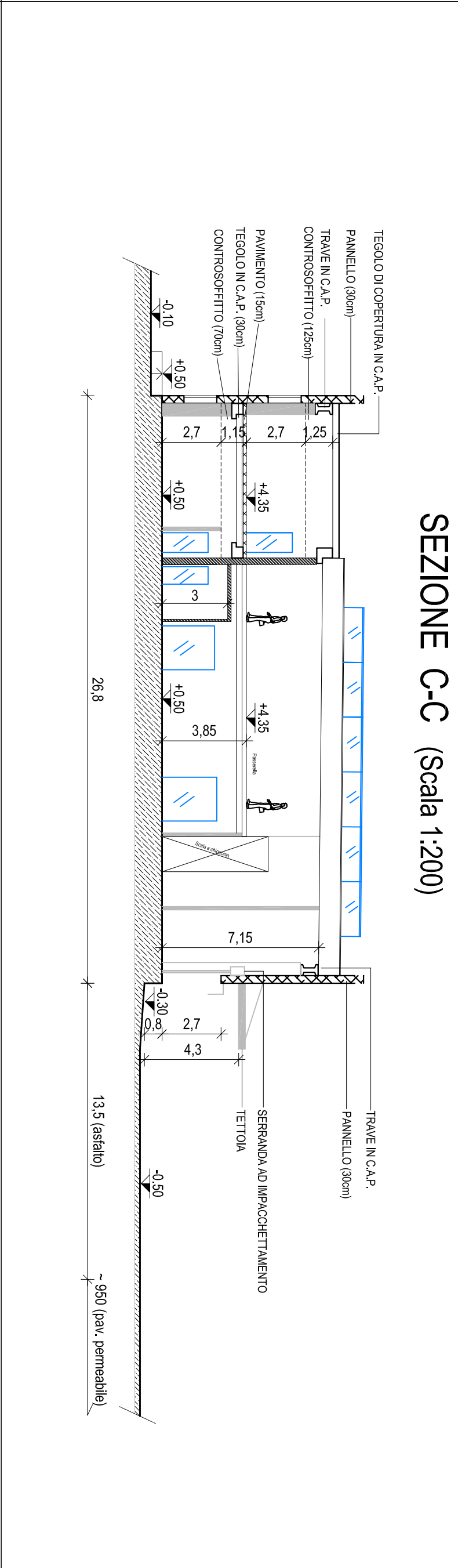
PROSPETTO EST - EDIFICIO NUOVO  
(Scala 1:200)



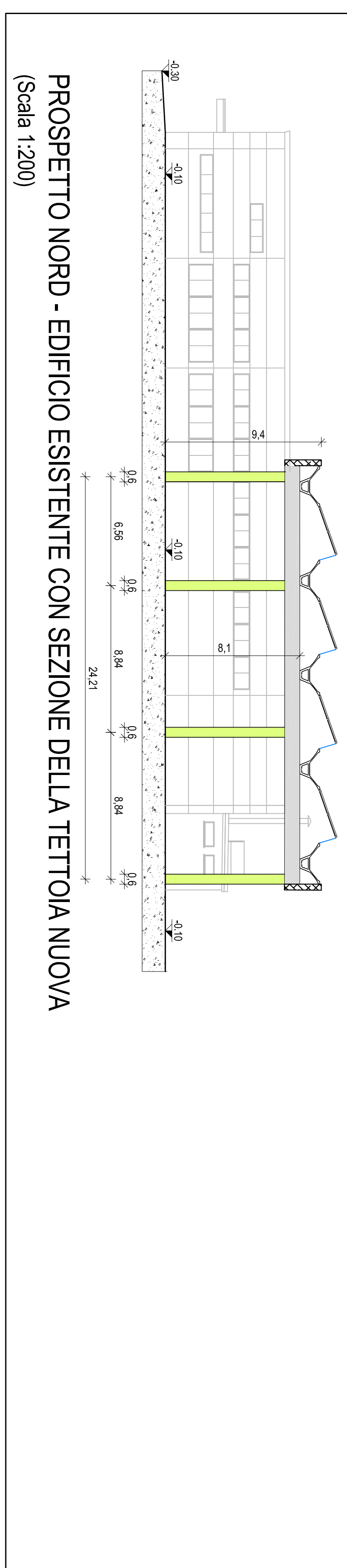
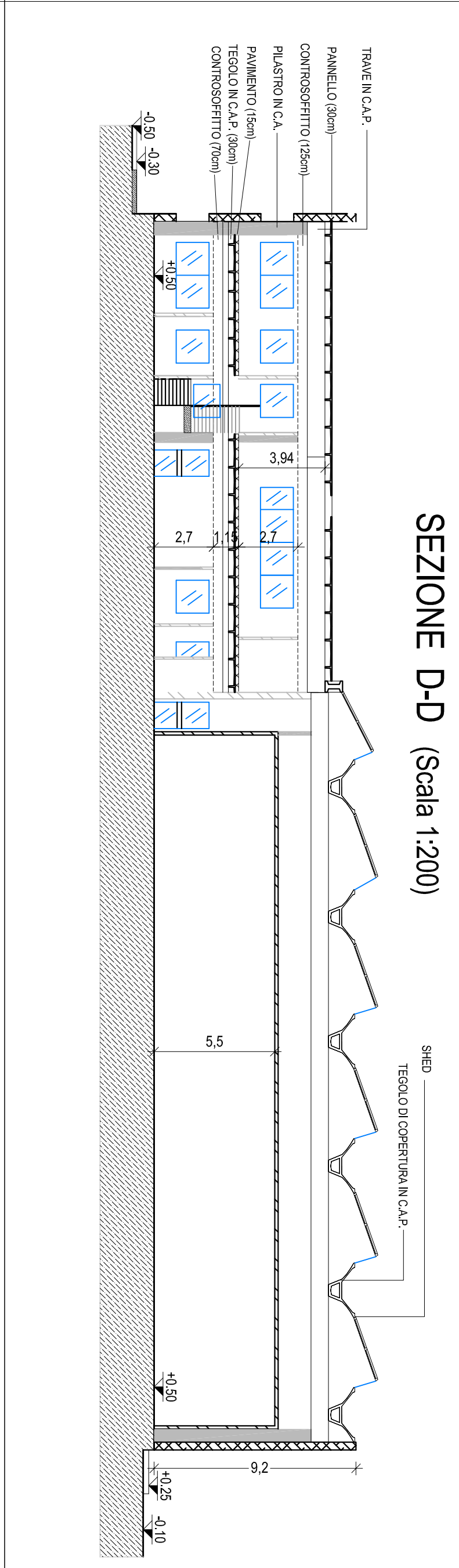
PROSPETTO NORD - EDIFICIO NUOVO  
(Scala 1:200)



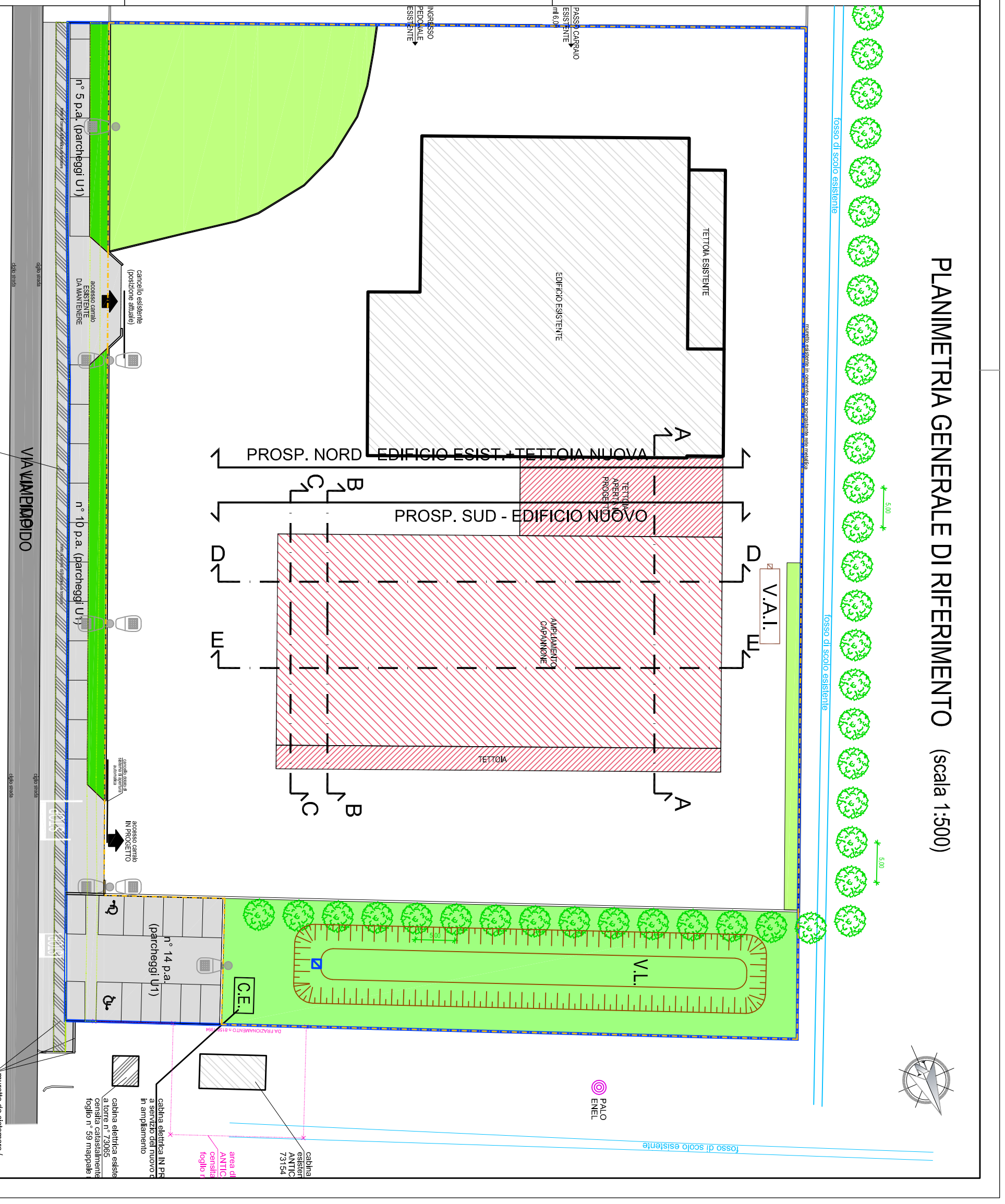
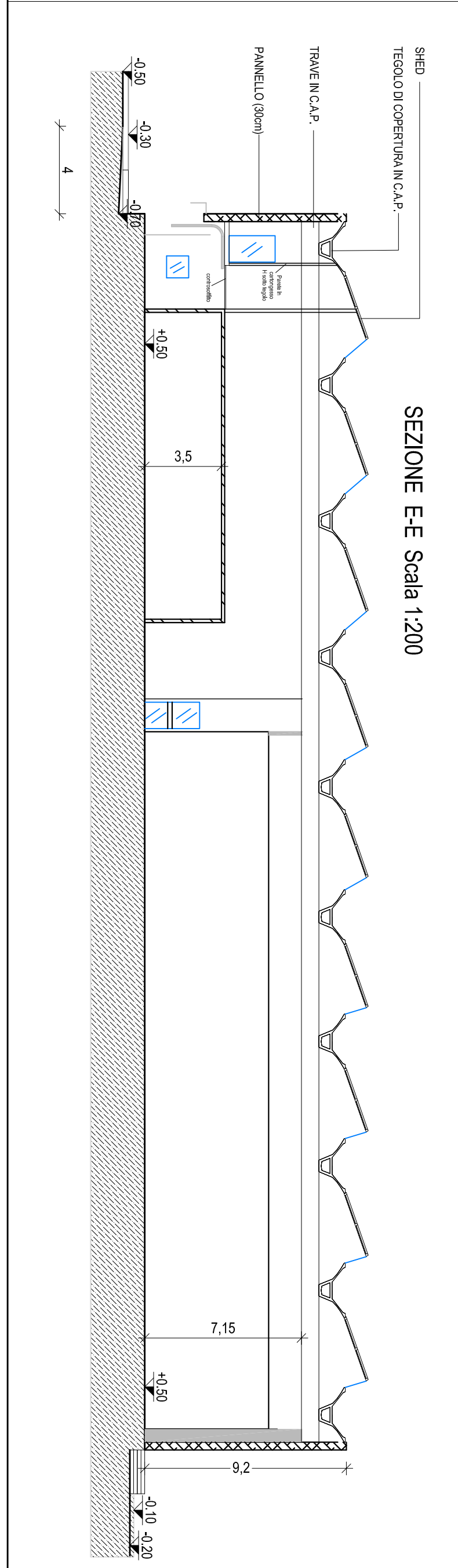
PROSPETTO OVEST - EDIFICIO NUOVO  
(Scala 1:200)



PROSPETTO SUD - EDIFICIO NUOVO  
(Scala 1:200)



PROSPETTO NORD - EDIFICIO ESISTENTE CON SEZIONE DELLA TETTOIA NUOVA  
(Scala 1:200)



**STUDIO INGEGNERIA GUIDETTI - SERRI**

VIA P. C. CODOLINI, 14 - 42124 REGGIO EMILIA  
 EMILIA ROMAGNA  
 TEL. 0522 597934 - FAX 0522 593004

PROGETTO ARCHITETTONICO FUTURO EDIFICIO  
 PROSPETTI 0/550/0/11

APPROVAZIONE DEL PIANO PARTICOLAREGGIATO

11/07/2016

VARIE

P34/2016

15